

Flying Coral Fish Wallcovering

MOOOI | FOR MOOOI WALLCOVERING



3D wallcovering with a satin look and a pattern resembling the pectoral fins of the Flying Coral Fish, shaped like delicate, thin and translucent wings.

Detailing

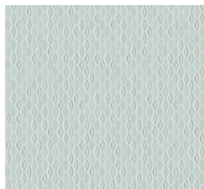


The full wallcovering collection can be discovered at moooiwallcovering.com

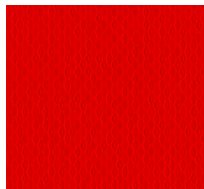
Colours



Pacific blue



Pearl



Poppy



silver grey

Flying Coral Fish Wallcovering / Flying Coral Fish

Product

WIDTH 124cm | 48.8"

HEIGHT 100cm | 39.4"

DEPTH 0.2cm | 0.1"

Packaging

WIDTH 124cm | 48.8"

HEIGHT 1cm | 0.4"

CUBAGE 0m³ | 0ft³

LENGTH 1cm | 0.4"

WEIGHT 1kg | 2.2lbs

Technical

MATERIAL

3D textile wallcovering on non-woven backing

COLLECTION

Moooli Wallcovering Extinct Animals

UNIT DIMENSIONS

Width 124 cm (48.8"), sold by the linear metre/yard

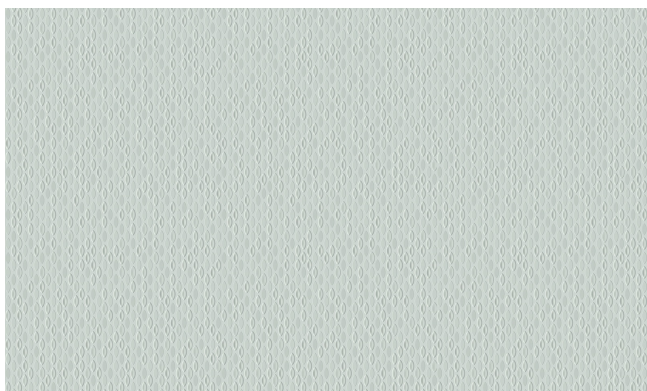
ADHESIVE

Adhesive for non-woven wallcovering like Arte Clearpro or 100% dispersion adhesive

HOW TO PASTE

Paste the wall

REPEAT IMAGE



PATTERN

Flying Coral Fish

REPEAT TYPE

→|0 Free match

LIGHT RESISTANCE

☀️ Good lightfastness

CARE

Spongeable during hanging (dab away damp glue)

HOW TO REMOVE

🔪 Strippable